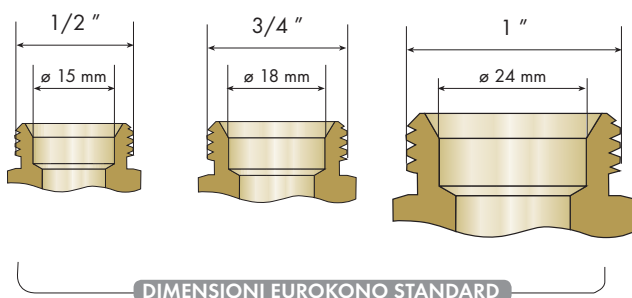


## **EUROKONO**

RACCORDI A STRINGERE PER TUBO MULTISTRATO  
CON ADATTATORE GALVANICAMENTE TRATTATI



### SPECIFICHE PER L'UTILIZZO

I raccordi Comisa Eurokono non sono adatti all'installazione sotto traccia. Seguire scrupolosamente le istruzioni fornite da Comisa S.p.A.

### PRESTAZIONI

Pressione max di esercizio	10 bar
Temperatura max di esercizio	95°C
Temperatura max di picco	110°C (1 h)

I dati sono riferiti al sistema Comisa Eurokono abbinati a tubo multistrato Comisa.

### GARANZIA

10 anni a norma di legge.

Tale garanzia decade qualora

- l'installazione non avvenga secondo le istruzioni di montaggio riportate nelle pubblicazioni di Comisa S.p.A.
- Il circuito venga impiegato per condurre liquidi diversi da quelli riportati nelle pubblicazioni di Comisa S.p.A.
- Nei circuiti vengano immessi liquidi a valori di pressione e temperatura diversi dai rispettivi limiti riportati nelle pubblicazioni di Comisa S.p.A.

### CERTIFICAZIONI

Il raccordo Comisa Eurokono è certificato da DVGW (n. DW-8501BT0290)

### TIPOLOGIA PRODOTTO

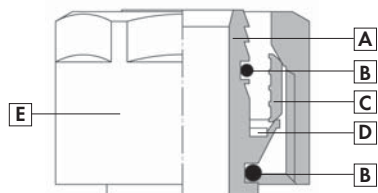
Raccordi a stringere in ottone

### FUNZIONE

Raccordi per impianti di adduzione acqua sanitaria  
Raccordi per impianti di riscaldamento

I raccordi Comisa Eurokono sono stati progettati per l'utilizzo con tubo multistrato Comisa. La compatibilità dei raccordi con tubo multistrato di altro produttore o di diversa tipologia deve essere esplicitamente richiesta a Comisa S.p.A. che, dopo avere attuato un proprio protocollo di prove, rilascerà una certificazione di garanzia.

### MATERIALI



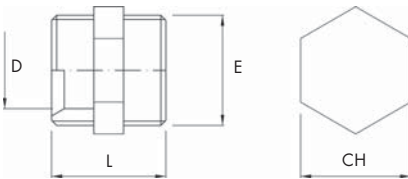
- A) **Inserto:** ottone EN 12165 CW 617 N adatto per il passaggio di liquidi alimentari destinati al consumo umano
- B) **O'Ring:** realizzati con mescola EPDM-perossidico
- C) **Ogiva:** ottone EN 12165 CW 617 N adatto per il passaggio di liquidi alimentari destinati al consumo umano
- D) **Distanziale:** materiale plastico isolante
- E) **Dado:** ottone EN 12165 CW 617 N adatto per il passaggio di liquidi alimentari destinati al consumo umano

### TABELLA PER IL CALCOLO DELLE PERDITE DI CARICO LOCALIZZATE (ESPRESSE IN METRI EQUIVALENTI DI TUBO) LUNGHEZZE EQUIVALENTI

Ø 16 x 2,0	0,80	0,70	0,60	1,40	1,80	0,35	0,80
Ø 18 x 2,0	1,00	0,90	0,80	1,60	2,10	0,45	1,00
Ø 20 x 2,5	1,10	1,00	0,90	1,70	2,20	0,45	1,10
Ø 20 x 2,0	1,30	1,15	1,00	1,90	2,70	0,50	1,30
Ø 26 x 3,0	1,80	1,60	1,40	2,50	4,30	0,65	1,80
Ø 32 x 3,0	2,70	2,30	2,00	4,20	6,30	0,85	2,70
Ø 40 x 3,5	3,00	2,60	2,30	5,00	7,50	1,00	3,00
Ø 50 x 4,0	4,60	4,20	3,80	6,70	10,00	1,30	4,60



## DIMENSIONI

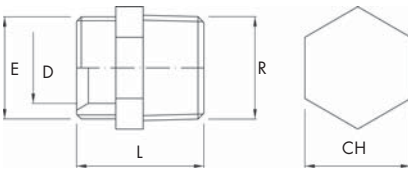


Misure mm	E	D	L	CH	Codice
1/2" euro	1/2"	ø 15	27	21	88.01.005
3/4" euro	3/4"	ø 18	27	26	88.01.010
1" euro	1"	ø 24	29	33	88.01.015

**88.01**



RACCORDO DIRITTO  
DOPPIO

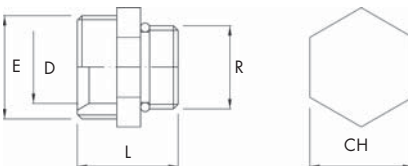


Misure mm	E	D	L	CH	R	Codice
1/2" euro x 1/2"	1/2"	ø 15	30	21	1/2"	88.01.020
3/4" euro x 1/2"	3/4"	ø 18	32	26	1/2"	88.01.021
3/4" euro x 3/4"	3/4"	ø 18	33	27	3/4"	88.01.025
1" euro x 3/4"	1"	ø 24	31	33	3/4"	88.01.030
1" euro x 1"	1"	ø 24	35	33	1"	88.01.035

**88.01**



RACCORDO DIRITTO  
MASCHIO ISO 7/2

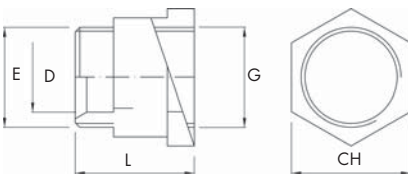


Misure mm	E	D	L	CH	R	Codice
3/4" euro x 1/2"	3/4"	ø 18	26	26	1/2"	88.01.037
3/4" euro x 1/2"	3/4"	ø 18	26	26	1/2"	88.01.038

**88.01**



RACCORDO DIRITTO  
CON FILETTO MASCHIO  
E O-RING

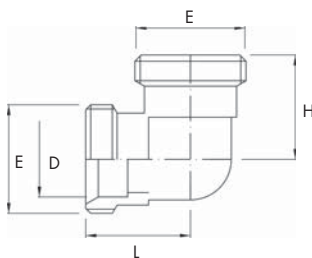


Misure mm	E	D	L	CH	G	Codice
1/2" euro x 1/2"	1/2"	ø 15	29	25	1/2"	88.01.045
3/4" euro x 1/2"	3/4"	ø 18	26	26	1/2"	88.01.065
3/4" euro x 3/4"	3/4"	ø 18	31	31	3/4"	88.01.050
1" euro x 3/4"	1"	ø 24	37	38	3/4"	88.01.055
1" euro x 1"	1"	ø 24	37	38	1"	88.01.060

**88.01**



RACCORDO DIRITTO  
FEMMINA

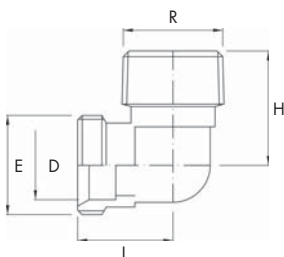


Misure mm	E	D	L	H	Codice
1/2" euro	1/2"	ø 15	22	22	88.01.100
3/4" euro	3/4"	ø 18	25	25	88.01.105
1" euro	1"	ø 24	30	30	88.01.110

**88.01**



GOMITO 90°



Misure mm	E	D	L	R	H	Codice
1/2" euro x 1/2"	1/2"	ø 15	24	1/2"	26	88.01.115
3/4" euro x 1/2"	3/4"	ø 18	26	1/2"	26	88.01.130
3/4" euro x 3/4"	3/4"	ø 18	25	3/4"	30	88.01.120
1" euro x 1"	1"	ø 24	30	1"	37	88.01.125
1" euro x 3/4"	1"	ø 24	30	3/4"	34	88.01.135

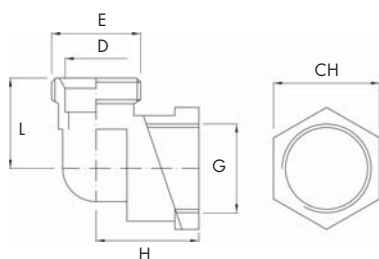
**88.01**



GOMITO MASCHIO  
90°



## DIMENSIONI

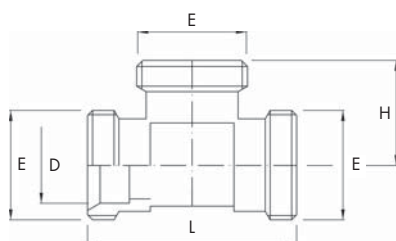


Misure mm	E	D	L	CH	G	H	Codice
1/2" euro x 1/2"	1/2"	ø 15	24	25	1/2"	25	88.01.150
3/4" euro x 1/2"	3/4"	ø 18	27	25	1/2"	27	88.01.165
3/4" euro x 3/4"	3/4"	ø 18	27	31	3/4"	30	88.01.155
1" euro x 3/4"	1"	ø 24	30		3/4"	38	88.01.170
1" euro x 1"	1"	ø 24	30		1"	38	88.01.160

### 88.01



GOMITO FEMMINA  
90°

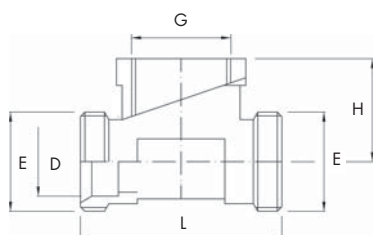


Misure mm	E	D	L	H	Codice
1/2" euro	1/2"	ø 15	44	22	88.01.200
3/4" euro	3/4"	ø 18	50	25	88.01.205
1" euro	1"	ø 24	60	30	88.01.210

### 88.01



RACCORDO A T

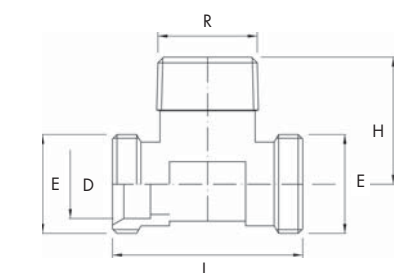


Misure mm	E	D	L	G	H	Codice
1/2" euro x 1/2" x 1/2" euro	1/2"	ø 15	47	1/2"	22	88.01.250
3/4" euro x 1/2" x 3/4" euro	3/4"	ø 18	53	1/2"	27	88.01.270
3/4" euro x 3/4" x 3/4" euro	3/4"	ø 18	53	3/4"	27	88.01.255
1" euro x 3/4" x 1" euro	1"	ø 24	64	3/4"	27	88.01.265
1" euro x 1" x 1" euro	1"	ø 24	64	1"	32	88.01.260

### 88.01



RACCORDO A T  
FEMMINA

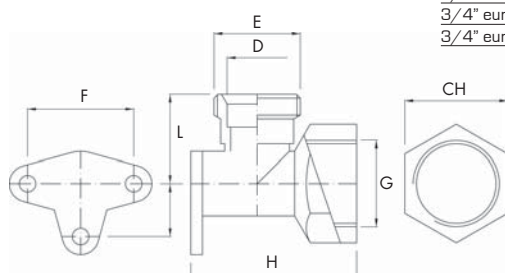


Misure mm	E	D	L	R	H	Codice
1/2" euro x 1/2" x 1/2" euro	1/2"	ø 15	44	1/2"	29	88.01.280
3/4" euro x 3/4" x 3/4" euro	3/4"	ø 18	50	3/4"	34	88.01.285
1" euro x 3/4" x 1" euro	1"	ø 24	65	3/4"	34	88.01.295
1" euro x 1" x 1" euro	1"	ø 24	65	1"	35	88.01.290

### 88.01



RACCORDO A T  
MASCHIO



Misure mm	E	D	L	Ch	G	H	F	Codice
1/2" euro x 1/2"	1/2"	ø 15	24	25	1/2"	39	34	88.01.300
3/4" euro x 1/2"	3/4"	ø 18	27	25	1/2"	44	32	88.01.310
3/4" euro x 3/4"	3/4"	ø 24	27	31	3/4"	50	32	88.01.305

### 88.01

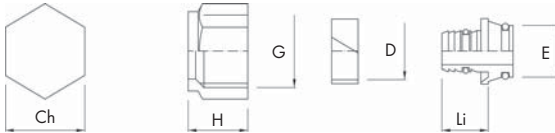


GOMITO FEMMINA  
FLANGIATO 90°



## DIMENSIONI

Misure mm	Ch	H	G	D	Li	E	Codice
16 x 2 - 1/2"	24	18	1/2"	ø 16	14	1/2" - ø 15	88.03.016
16 x 2,25 - 1/2"	24	18	1/2"	ø 16	14	1/2" - ø 15	88.03.017

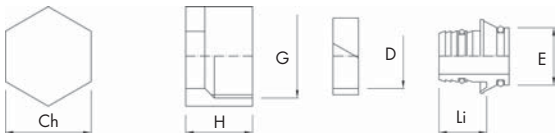


**88.03**



KIT CON DADO 1/2"

Misure mm	Ch	H	G	D	Li	E	Codice
14 x 2 - 3/4"	27	18	3/4"	ø 14	15	3/4" - ø 18	88.03.110
16 x 2 - 3/4"	27	18	3/4"	ø 16	15	3/4" - ø 18	88.03.116
16 x 2,25 - 3/4"	27	18	3/4"	ø 16	15	3/4" - ø 18	88.03.120
17 x 2 - 3/4"	27	21	3/4"	ø 17	15	3/4" - ø 18	88.03.123
18 x 2 - 3/4"	27	21	3/4"	ø 18	15	3/4" - ø 18	88.03.126
20 x 2 - 3/4"	27	21	3/4"	ø 20	15	3/4" - ø 18	88.03.136
20 x 2,5 - 3/4"	27	21	3/4"	ø 20	15	3/4" - ø 18	88.03.140

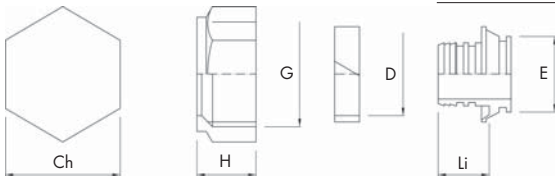


**88.03**



KIT CON DADO 3/4"

Misure mm	Ch	H	G	D	Li	E	Codice
16 x 2 - 1"	37	17	1"	ø 16	15	1" - ø 24	88.03.310
20 x 2 - 1"	37	17	1"	ø 20	15	1" - ø 24	88.03.315
26 x 3 - 1"	37	19	1"	ø 26	16	1" - ø 24	88.03.321

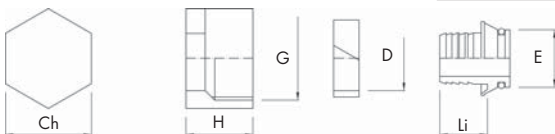


**88.03**



KIT CON DADO 1"

Misure mm	Ch	H	G	D	Li	E	Codice
12 x 2 - 3/4" PEX	27	20	3/4"	ø 12	18	3/4" - ø 18	88.03.006
16 x 2 - 3/4" PEX	27	18	3/4"	ø 16	15	3/4" - ø 18	88.03.118
17 x 2 - 3/4" PEX	27	21	3/4"	ø 17	15	3/4" - ø 18	88.03.119
20 x 2 - 3/4" PEX	27	21	3/4"	ø 20	15	3/4" - ø 18	88.03.138



**88.03**



KIT CON DADO 3/4"

Misure mm	Codice
15 x 1/2"	88.03.150

**88.03**



KIT PER TUBO RAME  
CON INSERTO

Misure mm	Codice
12 x 1/2"	88.03.170
12 x 3/4"	88.03.175
15 x 1"	88.03.165
18 x 1"	88.03.155
22 x 1"	88.03.160

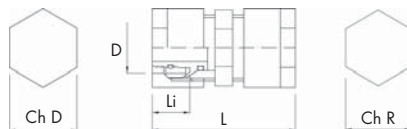
**88.03**



KIT PER TUBO RAME  
CON INSERTO



## DIMENSIONI



Misure mm	Ch D	Ch R	D	Li	L	Codice
16 x 2	24	21	ø 16	14	57	88.03.415
16 x 2,25	24	21	ø 16	14	57	88.03.416
14 x 2	27	26	ø 14	15	57	88.03.419
16 x 2	27	26	ø 16	15	57	88.03.420
16 x 2,25	27	26	ø 16	15	57	88.03.421
17 x 2	27	26	ø 17	15	57	88.03.425
18 x 2	27	26	ø 18	15	57	88.03.430
20 x 2	27	26	ø 20	15	57	88.03.435
20 x 2,5	27	26	ø 20	15	57	88.03.436
26 x 3	37	33	ø 26	16	61	88.03.445
32 x 3	48	44	ø 32	20	68	88.03.450

### 88.03



RACCORDO DIRITTO  
DOPPIO

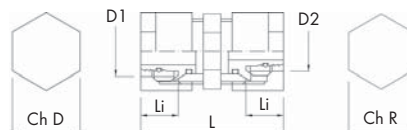


Misure mm	Ch D	Ch R	D	Li	L	R	Codice
16 x 2 - 1/2"	24	21	ø 16	14	45	1/2"	88.03.515
16 x 2,25 - 1/2"	24	21	ø 16	14	45	1/2"	88.03.516
14 x 2 - 1/2"	27	26	ø 14	15	47	1/2"	88.03.519
16 x 2 - 1/2"	27	26	ø 16	15	47	1/2"	88.03.520
16 x 2,25 - 1/2"	27	26	ø 16	15	47	1/2"	88.03.521
17 x 2 - 1/2"	27	26	ø 17	15	47	1/2"	88.03.525
18 x 2 - 1/2"	27	26	ø 18	15	47	1/2"	88.03.530
20 x 2 - 1/2"	27	26	ø 20	15	47	1/2"	88.03.535
20 x 2,5 - 1/2"	27	26	ø 20	15	47	1/2"	88.03.536
16 x 2 - 3/4"	27	27	ø 16	15	47	3/4"	88.03.540
16 x 2,25 - 3/4"	27	27	ø 16	15	47	3/4"	88.03.541
17 x 2 - 3/4"	27	27	ø 17	15	47	3/4"	88.03.545
18 x 2 - 3/4"	27	27	ø 18	15	47	3/4"	88.03.550
20 x 2 - 3/4"	27	27	ø 20	15	47	3/4"	88.03.555
20 x 2,5 - 3/4"	27	27	ø 20	15	47	3/4"	88.03.556
26 x 3 - 3/4"	37	33	ø 26	16	48	3/4"	88.03.560
26 x 3 - 1"	37	33	ø 26	16	51	1"	88.03.580
32 x 3 - 1"	48	44	ø 32	20	54	1"	88.03.585

### 00.03



RACCORDO DIRITTO  
MASCHIO ISO 7/2

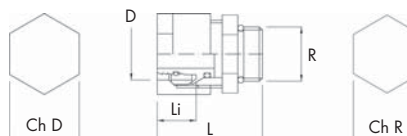


Misure mm	Ch D	Ch R	D1	D2	Li	L	Codice
18 x 2 - 16 x 2	27	26	ø 18	ø 16	15	57	88.03.840
20 x 2 - 16 x 2	27	26	ø 20	ø 16	15	57	88.03.855
20 x 2,5 - 16 x 2,25	27	26	ø 20	ø 16	15	57	88.03.856
20 x 2 - 17 x 2	27	26	ø 20	ø 17	15	57	88.03.860
20 x 2 - 18 x 2	27	26	ø 20	ø 18	15	57	88.03.865

### 00.03



RACCORDO DIRITTO  
RIDOTTO



Misure mm	Ch D	Ch R	D	Li	L	R	Codice
16 x 2 - 1/2"	24	27	ø 16	14	40	1/2"	88.03.610
16 x 2,25 - 1/2"	24	27	ø 16	14	40	1/2"	88.03.616
14 x 2 - 1/2"	27	26	ø 14	15	40	1/2"	88.03.619
16 x 2 - 1/2"	27	26	ø 16	15	40	1/2"	88.03.620
18 x 2 - 1/2"	27	26	ø 18	15	40	1/2"	88.03.630
20 x 2 - 1/2"	27	26	ø 20	15	40	1/2"	88.03.635

### 88.03



RACCORDO DIRITTO  
MASCHIO  
NICHELATO CON OR



Misure mm	Ch D	Ch R	D	Li	L	G	Codice
16 x 2 - 1/2"	24	25	ø 16	14	44	1/2"	88.03.710
16 x 2,25 - 1/2"	24	25	ø 16	14	44	1/2"	88.03.711
14 x 2 - 1/2"	27	26	ø 14	15	46	1/2"	88.03.714
16 x 2 - 1/2"	27	26	ø 16	15	46	1/2"	88.03.715
16 x 2,25 - 1/2"	27	26	ø 16	15	46	1/2"	88.03.716
17 x 2 - 1/2"	27	26	ø 17	15	46	1/2"	88.03.720
18 x 2 - 1/2"	27	26	ø 18	15	46	1/2"	88.03.725
20 x 2 - 1/2"	27	26	ø 20	15	46	1/2"	88.03.730
20 x 2,5 - 1/2"	27	26	ø 20	15	46	1/2"	88.03.731
16 x 2 - 3/4"	27	31	ø 16	15	46	3/4"	88.03.735
16 x 2,25 - 3/4"	27	31	ø 16	15	46	3/4"	88.03.736
17 x 2 - 3/4"	27	31	ø 17	15	46	3/4"	88.03.740
18 x 2 - 3/4"	27	31	ø 18	15	46	3/4"	88.03.745
20 x 2 - 3/4"	27	31	ø 20	15	46	3/4"	88.03.750
20 x 2,5 - 3/4"	27	31	ø 20	15	46	3/4"	88.03.751
26 x 3 - 3/4"	38	31	ø 26	16	53	3/4"	88.03.755
26 x 3 - 1"	38	38	ø 26	16	53	1"	88.03.775
32 x 3 - 1"	48	44	ø 32	20	54	1"	88.03.780

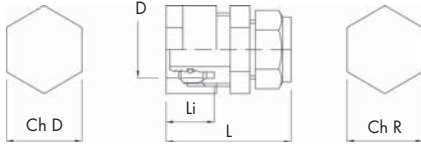
### 88.03



RACCORDO DIRITTO  
FEMMINA



## DIMENSIONI

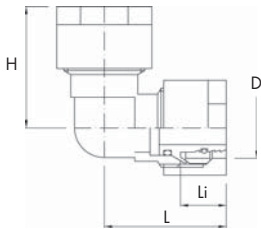


Misure mm	Ch D	Ch R	D	Li	L	Codice
16x2	24	21	ø 16	16	41	87.31.605
18x2	27	26	ø 18	15	50	87.31.610
20x2	27	27	ø 20	17	44	87.31.615
26x3	37	33	ø 26	19	50	87.31.620

### 87.31



TAPPI CIECHI  
A STRINGERE  
PER PROVE IMPIANTO

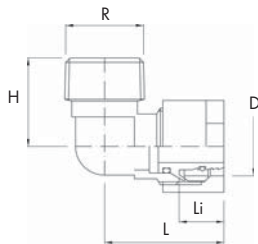


Misure mm	Ch D	D	Li	L	H	Codice
16 x 2	24	ø 16	14	37	37	88.04.015
16 x 2,25	24	ø 16	14	37	37	88.04.016
14 x 2	27	ø 14	15	40	40	88.04.019
16 x 2	27	ø 16	15	40	40	88.04.020
16 x 2,25	27	ø 16	15	40	40	88.04.021
17 x 2	27	ø 17	15	40	40	88.04.025
18 x 2	27	ø 18	15	40	40	88.04.030
20 x 2	27	ø 20	15	40	40	88.04.035
20 x 2,5	27	ø 20	15	40	40	88.04.036
26 x 3	37	ø 26	16	46	46	88.04.045
32 x 3	48	ø 32	20	54	54	88.04.050

### 88.04



GOMITO 90°

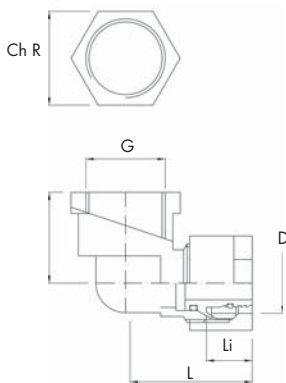


Misure mm	Ch D	D	Li	L	H	R	Codice
16 x 2 - 1/2"	24	ø 16	14	39	26	1/2"	88.04.115
16 x 2,25 - 1/2"	24	ø 16	14	39	26	1/2"	88.04.116
14 x 2 - 1/2"	27	ø 14	15	41	26	1/2"	88.04.119
16 x 2 - 1/2"	27	ø 16	15	41	26	1/2"	88.04.120
16 x 2,25 - 1/2"	27	ø 16	15	41	26	1/2"	88.04.121
17 x 2 - 1/2"	27	ø 17	15	41	26	1/2"	88.04.125
18 x 2 - 1/2"	27	ø 18	15	41	26	1/2"	88.04.130
20 x 2 - 1/2"	27	ø 20	15	41	26	1/2"	88.04.135
20 x 2,5 - 1/2"	27	ø 20	15	41	26	1/2"	88.04.136
16 x 2 - 3/4"	27	ø 16	15	40	30	3/4"	88.04.140
16 x 2,25 - 3/4"	27	ø 16	15	40	30	3/4"	88.04.141
17 x 2 - 3/4"	27	ø 17	15	40	30	3/4"	88.04.145
18 x 2 - 3/4"	27	ø 18	15	40	30	3/4"	88.04.150
20 x 2 - 3/4"	27	ø 20	15	40	30	3/4"	88.04.155
20 x 2,5 - 3/4"	27	ø 20	15	40	30	3/4"	88.04.156
26 x 3 - 3/4"	37	ø 26	16	46	37	3/4"	88.04.160
26 x 3 - 1"	37	ø 26	16	46	34	1"	88.04.180
32 x 3 - 1"	48	ø 32	20	54	45	1"	88.04.185

### 88.04



GOMITO MASCHIO  
90°



Misure mm	Ch D	Ch R	D	Li	L	H	G	Codice
16 x 2 - 1/2"	24	25	ø 16	14	39	25	1/2"	88.04.215
16 x 2,25 - 1/2"	24	25	ø 16	14	39	25	1/2"	88.04.216
14 x 2 - 1/2"	27	25	ø 14	15	42	27	1/2"	88.04.219
16 x 2 - 1/2"	27	25	ø 16	15	42	27	1/2"	88.04.220
16 x 2,25 - 1/2"	27	25	ø 16	15	42	27	1/2"	88.04.221
17 x 2 - 1/2"	27	25	ø 17	15	42	27	1/2"	88.04.225
18 x 2 - 1/2"	27	25	ø 18	15	42	27	1/2"	88.04.230
20 x 2 - 1/2"	27	25	ø 20	15	42	27	1/2"	88.04.235
20 x 2,5 - 1/2"	27	25	ø 20	15	42	27	1/2"	88.04.236
14 x 2 - 3/4"	27	31	ø 14	15	42	30	3/4"	88.04.239
16 x 2 - 3/4"	27	31	ø 16	15	42	30	3/4"	88.04.240
16 x 2,25 - 3/4"	27	31	ø 16	15	42	30	3/4"	88.04.241
17 x 2 - 3/4"	27	31	ø 17	15	42	30	3/4"	88.04.245
18 x 2 - 3/4"	27	31	ø 18	15	42	30	3/4"	88.04.250
20 x 2 - 3/4"	27	31	ø 20	15	42	30	3/4"	88.04.255
20 x 2,5 - 3/4"	27	31	ø 20	15	42	30	3/4"	88.04.256
26 x 3 - 3/4"	37	\	ø 26	16	46	32	3/4"	88.04.260
26 x 3 - 1"	37	\	ø 26	16	46	38	1"	88.04.280
32 x 3 - 1"	48	\	ø 32	20	54	45	1"	88.04.285

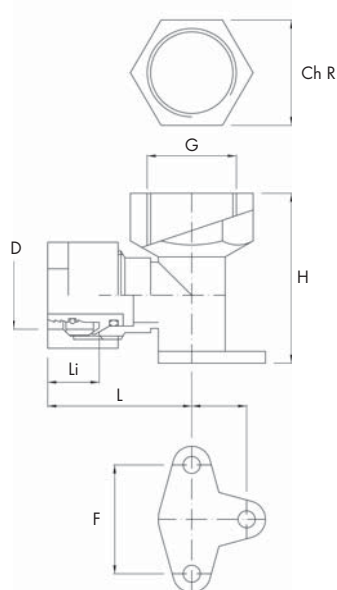
### 88.04



GOMITO FEMMINA  
90°



## DIMENSIONI

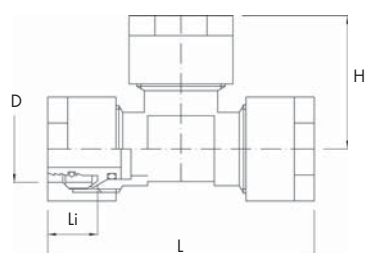


Misure mm	Ch D	Ch R	D	Li	L	H	G	F	Codice
16 x 2 - 1/2"	24	25	∅ 16	14	39	39	1/2"	34	88.04.315
16 x 2,25 - 1/2"	24	25	∅ 16	14	39	39	1/2"	34	88.04.316
14 x 2 - 1/2"	27	25	∅ 14	15	42	44	1/2"	32	88.04.319
16 x 2 - 1/2"	27	25	∅ 16	15	42	44	1/2"	32	88.04.320
16 x 2,25 - 1/2"	27	25	∅ 16	15	42	44	1/2"	32	88.04.321
17 x 2 - 1/2"	27	25	∅ 17	15	42	44	1/2"	32	88.04.325
18 x 2 - 1/2"	27	25	∅ 18	15	42	44	1/2"	32	88.04.330
20 x 2 - 1/2"	27	25	∅ 20	15	42	44	1/2"	32	88.04.335
20 x 2,5 - 1/2"	27	25	∅ 20	15	42	44	1/2"	32	88.04.336
16 x 2 - 3/4"	27	31	∅ 16	15	42	49	3/4"	32	88.04.350
16 x 2,25 - 3/4"	27	31	∅ 16	15	42	49	3/4"	32	88.04.351
17 x 2 - 3/4"	27	31	∅ 17	15	42	49	3/4"	32	88.04.355
18 x 2 - 3/4"	27	31	∅ 18	15	42	49	3/4"	32	88.04.360
20 x 2 - 3/4"	27	31	∅ 20	15	42	49	3/4"	32	88.04.365

### 88.04



GOMITO FLANGIATO  
FEMMINA 90°

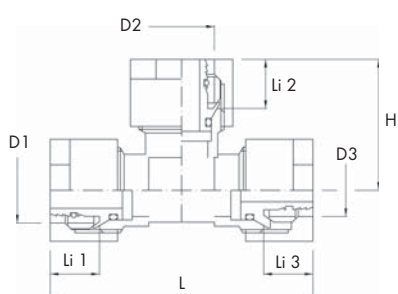


Misure mm	Ch D	D	Li	L	H	Codice
16 x 16 x 16	24	∅ 16	14	74	37	88.04.515
16 x 2,25 - 16 x 2,25 - 16 x 2,25	24	∅ 16	14	74	37	88.04.516
14 x 14 x 14	27	∅ 14	15	80	40	88.04.519
16 x 16 x 16	27	∅ 16	15	80	40	88.04.520
17 x 17 x 17	27	∅ 17	15	80	40	88.04.525
18 x 18 x 18	27	∅ 18	15	80	40	88.04.530
20 x 20 x 20	27	∅ 20	15	80	40	88.04.535
20 x 2,5 - 20 x 2,5 - 20 x 2,5	27	∅ 20	15	80	40	88.04.536
26 x 26 x 26	37	∅ 26	16	93	46	88.04.540
32 x 32 x 32	48	∅ 32	20	108	54	88.04.532

### 88.04



RACCORDO A T



Misure mm	Ch D	D1	Li 1	D2	Li 2	D3	Li 3	L	H	Codice
16 x 2 - 18 x 2 - 16 x 2	27	∅ 16	15	∅ 18	15	∅ 16	15	80	40	88.04.541
16 x 2 - 20 x 2 - 16 x 2	27	∅ 16	15	∅ 20	15	∅ 16	15	80	40	88.04.444
18 x 2 - 16 x 2 - 16 x 2	27	∅ 18	15	∅ 16	15	∅ 16	15	80	40	88.04.542
18 x 2 - 18 x 2 - 16 x 2	27	∅ 18	15	∅ 18	15	∅ 16	15	80	40	88.04.543
18 x 2 - 18 x 2 - 20 x 2	27	∅ 18	15	∅ 18	15	∅ 20	15	80	40	88.04.544
18 x 2 - 20 x 2 - 16 x 2	27	∅ 18	15	∅ 20	15	∅ 16	15	80	40	88.04.545
18 x 2 - 20 x 2 - 18 x 2	27	∅ 18	15	∅ 20	15	∅ 18	15	80	40	88.04.546
20 x 2 - 18 x 2 - 16 x 2	27	∅ 20	15	∅ 18	15	∅ 16	15	80	40	88.04.547
20 x 2 - 18 x 2 - 18 x 2	27	∅ 20	15	∅ 18	15	∅ 18	15	80	40	88.04.548
20 x 2 - 20 x 2 - 18 x 2	27	∅ 20	15	∅ 20	15	∅ 18	15	80	40	88.04.549
20 x 2 - 16 x 2 - 18 x 2	27	∅ 20	15	∅ 16	15	∅ 18	15	80	40	88.04.550
18 x 2 - 16 x 2 - 18 x 2	27	∅ 18	15	∅ 16	15	∅ 18	15	80	40	88.04.555
20 x 2 - 16 x 2 - 16 x 2	27	∅ 20	15	∅ 16	15	∅ 16	15	80	40	88.04.558
20 x 2 - 16 x 2 - 20 x 2	27	∅ 20	15	∅ 16	15	∅ 20	15	80	40	88.04.560
20 x 2 - 18 x 2 - 20 x 2	27	∅ 20	15	∅ 18	15	∅ 20	15	80	40	88.04.565
20 x 2 - 20 x 2 - 16 x 2	27	∅ 20	15	∅ 20	15	∅ 16	15	80	40	88.04.566
26 x 2 - 16 x 2 - 26 x 2	37	∅ 26	16	∅ 16	15	∅ 26	16	93	46	88.04.580
26 x 2 - 20 x 2 - 26 x 2	37	∅ 26	16	∅ 20	15	∅ 26	16	93	46	88.04.590

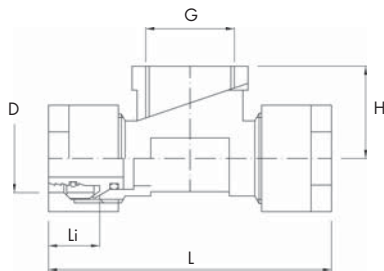
### 88.04

RACCORDO A T  
RIDOTTO





## DIMENSIONI

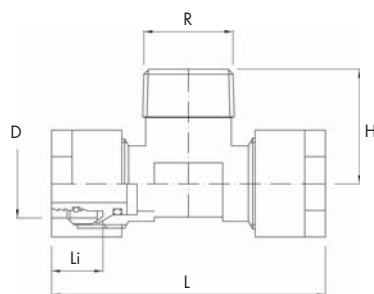


Misure mm	Ch	D	Li	L	H	G	Codice
16 x 1/2" x 16	24	ø 16	14	78	22	1/2"	88.04.615
16 x 2,25 - 1/2" - 16 x 2,25	24	ø 16	14	78	22	1/2"	88.04.616
14 x 1/2" x 14	27	ø 14	15	83	27	1/2"	88.04.619
16 x 1/2" x 16	27	ø 16	15	83	27	1/2"	88.04.620
16 x 2,25 - 1/2" - 16 x 2,25	27	ø 16	15	83	27	1/2"	88.04.621
17 x 1/2" x 17	27	ø 17	15	83	27	1/2"	88.04.625
18 x 1/2" x 18	27	ø 18	15	83	27	1/2"	88.04.630
20 x 1/2" x 20	27	ø 20	15	83	27	1/2"	88.04.635
20 x 2,5 - 1/2" - 20 x 2,5	27	ø 20	15	83	27	1/2"	88.04.636
16 x 3/4" x 16	27	ø 16	15	83	27	3/4"	88.04.640
16 x 2,25 - 3/4" - 16 x 2,25	27	ø 16	15	83	27	3/4"	88.04.641
17 x 3/4" x 17	27	ø 17	15	83	27	3/4"	88.04.645
18 x 3/4" x 18	27	ø 18	15	83	27	3/4"	88.04.650
20 x 3/4" x 20	27	ø 20	15	83	27	3/4"	88.04.655
20 x 2,5 - 3/4" - 20 x 2,5	27	ø 20	15	83	27	3/4"	88.04.656
26 x 3/4" x 26	37	ø 26	16	97	32	3/4"	88.04.660
26 x 1" x 26	37	ø 26	16	97	32	1"	88.04.680
32 x 1" x 32	48	ø 32	20	108	45	1"	88.04.685

### 88.04



RACCORDO A T  
FEMMINA



Misure mm	Ch	D	Li	L	H	R	Codice
16 x 1/2" x 16	24	ø 16	14	75	29	1/2"	88.04.715
16 x 2,25 - 1/2" - 16 x 2,25	24	ø 16	14	75	29	1/2"	88.04.716
14 x 3/4" x 14	27	ø 14	15	80	33	3/4"	88.04.719
16 x 3/4" x 16	27	ø 16	15	80	33	3/4"	88.04.720
16 x 2,25 - 3/4" - 16 x 2,25	27	ø 16	15	80	33	3/4"	88.04.721
17 x 3/4" x 17	27	ø 17	15	80	33	3/4"	88.04.725
18 x 3/4" x 18	27	ø 18	15	80	33	3/4"	88.04.730
20 x 3/4" x 20	27	ø 20	15	80	33	3/4"	88.04.735
20 x 2,5 - 3/4" - 20 x 2,5	27	ø 20	15	80	33	3/4"	88.04.736
26 x 3/4" x 26	37	ø 26	16	98	33	3/4"	88.04.740
26 x 1" x 26	37	ø 26	16	98	35	1"	88.04.760
32 x 1" x 32	48	ø 32	20	108	45	1"	88.04.765

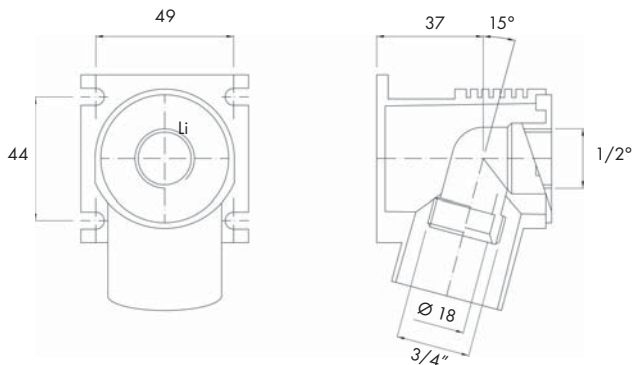
### 88.04



RACCORDO A T  
MASCHIO

Misure mm	Codice
3/4" Euro x 1/2" F	88.03.205

### 88.03



SCATOLA DI  
DISTRIBUZIONE  
SOTTOTRACCIA  
CON RACCORDO



## DIMENSIONI

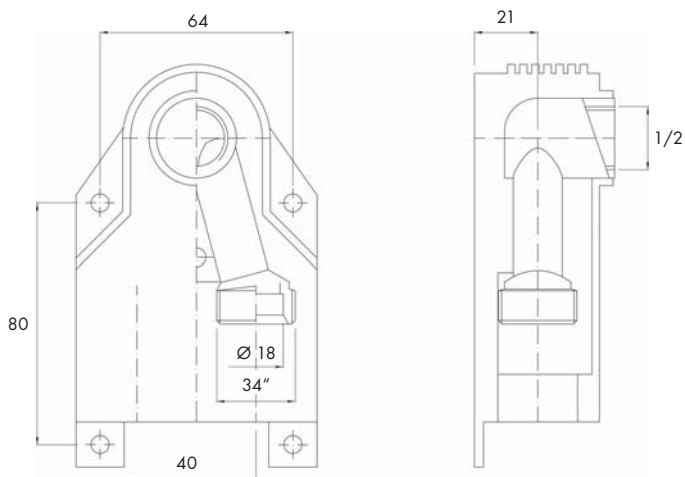
Misure mm

3/4" Euro x 1/2" F

Codice

88.03.210

**88.03**



SCATOLA DI  
DISTRIBUZIONE  
SOTTOTRACCIA  
CON RACCORDO

Misure mm

155

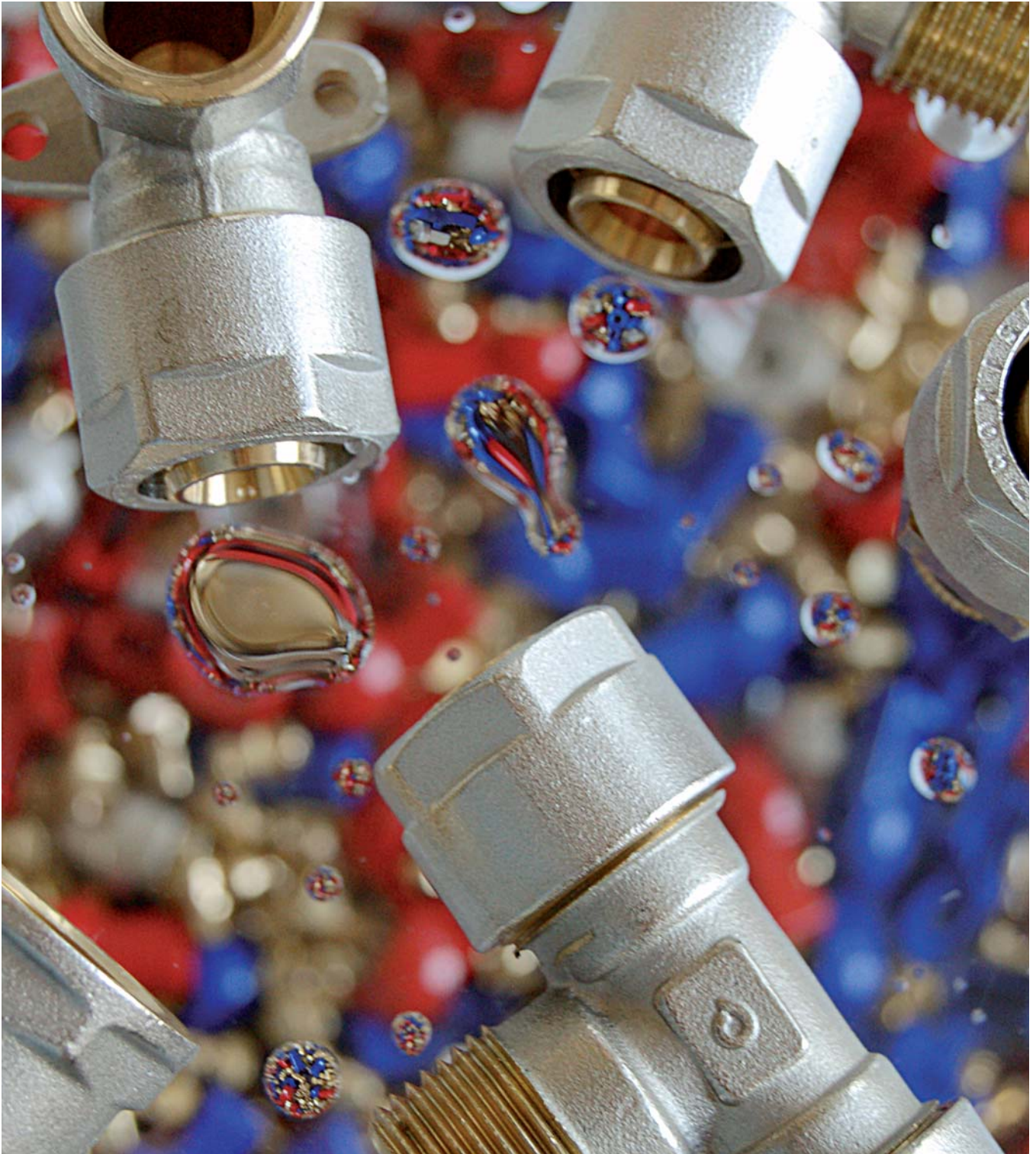
Codice

88.03.200

**88.03**

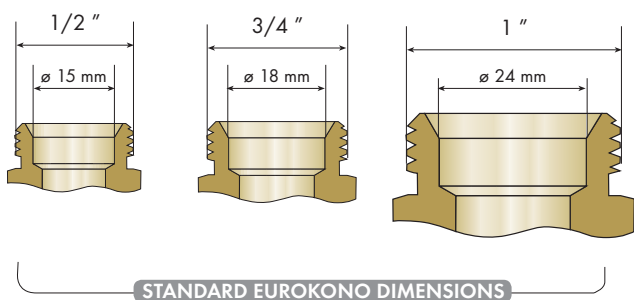


DIMA PER  
SCATOLA DI  
DISTRIBUZIONE  
SOTTOTRACCIA



## **EUROKONO**

PLATED SCREW FITTINGS FOR MULTILAYER PIPE WITH ADAPTOR



### INSTRUCTIONS FOR USE

The Eurokono Comisa fittings are suitable to be installed in underfloor systems. Please follow the instructions provided by Comisa S.p.A strictly.

### PERFORMANCE

Maximum operating pressure	10 bars
Maximum operating temperature	95° C
Maximum peak temperature	110° C (1 hr)

Data refers to the Comisa Eurokono system combined with Comisa multilayer pipe

### WARRANTY

10 years in compliance with the law.  
Such warranty shall not be deemed valid in case

- Installation is not carried out according to the installation instructions indicated in the Comisa S.p.A. publications
- The circuit is used for conveying liquids different from those indicated in the Comisa S.p.A., publications
- Liquids are introduced into the circuit at pressure and temperature values different from the respective restrictions indicated in the Comisa S.p.A. publications

### CERTIFICATES

The Comisa Eurokono fitting is certified by DVGW (n. DW-8501BT0290)

### TYPE OF PRODUCT

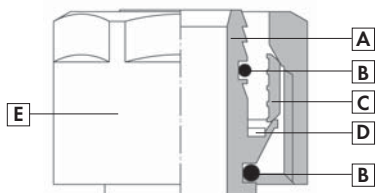
Brass screw fittings

### FUNCTION

Fittings sanitary water supply system  
Fittings for heating systems

The Comisa Eurokono fittings are designed to be used with a Comisa multilayer pipe. The compatibility of the fittings with multilayer pipes manufactured by others or of different type must be expressly approved by Comisa S.p.A which, after executing its tests protocol, shall issue a guarantee certificate.

### MATERIALS



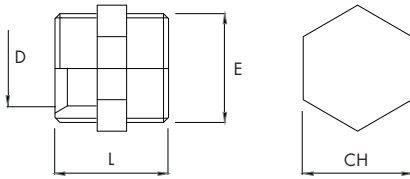
- A) **Insert:** EN 12165 CW 617 N brass suitable for the passage of nutritional liquids intended for human consumption
- B) **O-Ring:** made with EPDM-peroxide blend
- C) **Ogive:** EN 12165 CW 617 N brass suitable for the passage of nutritional liquids intended for human consumption
- D) **Spacer:** Insulating plastic material
- E) **Nut:** EN 12165 CW 617 N brass suitable for the passage of nutritional liquids intended for human consumption

**TABLE FOR CALCULATING LOCALISED FRICTION LOSSES (EXPRESSED IN EQUIVALENT PIPE METRES) EQUIVALENT LENGTHS**

Ø 16 x 2,0	0,80	0,70	0,60	1,40	1,80	0,35	0,80
Ø 18 x 2,0	1,00	0,90	0,80	1,60	2,10	0,45	1,00
Ø 20 x 2,5	1,10	1,00	0,90	1,70	2,20	0,45	1,10
Ø 20 x 2,0	1,30	1,15	1,00	1,90	2,70	0,50	1,30
Ø 26 x 3,0	1,80	1,60	1,40	2,50	4,30	0,65	1,80
Ø 32 x 3,0	2,70	2,30	2,00	4,20	6,30	0,85	2,70
Ø 40 x 3,5	3,00	2,60	2,30	5,00	7,50	1,00	3,00
Ø 50 x 4,0	4,60	4,20	3,80	6,70	10,00	1,30	4,60



## DIMENSIONS

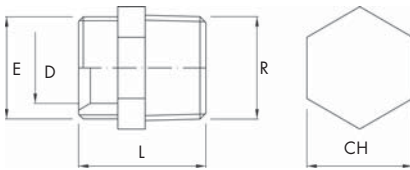


Size in mm	E	D	L	CH	Code
1/2" euro	1/2"	ø 15	27	21	88.01.005
3/4" euro	3/4"	ø 18	27	26	88.01.010
1" euro	1"	ø 24	29	33	88.01.015

**88.01**



DOUBLE STRAIGHT  
COUPLING

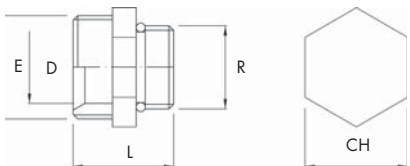


Size in mm	E	D	L	CH	R	Code
1/2" euro x 1/2"	1/2"	ø 15	30	21	1/2"	88.01.020
3/4" euro x 1/2"	3/4"	ø 18	32	26	1/2"	88.01.021
3/4" euro x 3/4"	3/4"	ø 18	33	27	3/4"	88.01.025
1" euro x 3/4"	1"	ø 24	31	33	3/4"	88.01.030
1" euro x 1"	1"	ø 24	35	33	1"	88.01.035

**88.01**



ISO 7/2 MALE  
STRAIGHT COUPLING

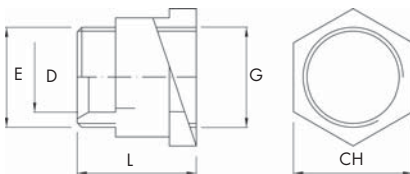


Size in mm	E	D	L	CH	R	Code
3/4" euro x 1/2"	3/4"	ø 18	26	26	1/2"	88.01.037
3/4" euro x 1/2"	3/4"	ø 18	26	26	1/2"	88.01.038

**88.01**



MALE STRAIGHT  
COUPLING WITH  
THREADING  
AND O-RING

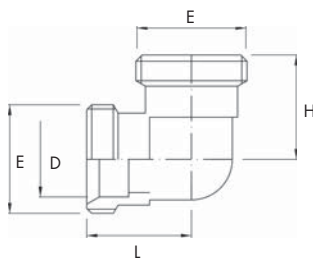


Size in mm	E	D	L	CH	G	Code
1/2" euro x 1/2"	1/2"	ø 15	29	25	1/2"	88.01.045
3/4" euro x 1/2"	3/4"	ø 18	26	26	1/2"	88.01.065
3/4" euro x 3/4"	3/4"	ø 18	31	31	3/4"	88.01.050
1" euro x 3/4"	1"	ø 24	37	38	3/4"	88.01.055
1" euro x 1"	1"	ø 24	37	38	1"	88.01.060

**88.01**



FEMALE STRAIGHT  
COUPLING

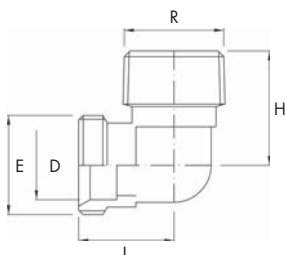


Size in mm	E	D	L	H	Code
1/2" euro	1/2"	ø 15	22	22	88.01.100
3/4" euro	3/4"	ø 18	25	25	88.01.105
1" euro	1"	ø 24	30	30	88.01.110

**88.01**



90° ELBOW  
COUPLING



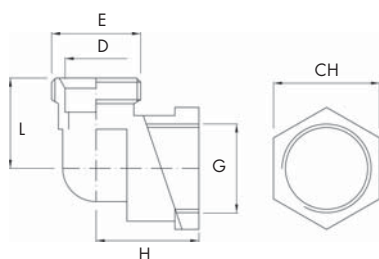
Size in mm	E	D	L	R	H	Code
1/2" euro x 1/2"	1/2"	ø 15	24	1/2"	26	88.01.115
3/4" euro x 1/2"	3/4"	ø 18	26	1/2"	26	88.01.130
3/4" euro x 3/4"	3/4"	ø 18	25	3/4"	30	88.01.120
1" euro x 1"	1"	ø 24	30	1"	37	88.01.125
1" euro x 3/4"	1"	ø 24	30	3/4"	34	88.01.135

**88.01**



90° MALE ELBOW  
COUPLING

## DIMENSIONS

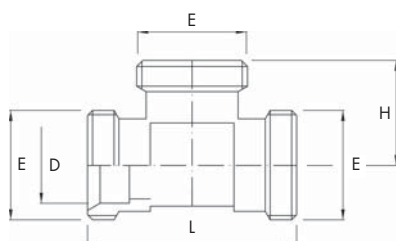


Size in mm	E	D	L	CH	G	H	Code
1/2" euro x 1/2"	1/2"	ø 15	24	25	1/2"	25	88.01.150
3/4" euro x 1/2"	3/4"	ø 18	27	25	1/2"	27	88.01.165
3/4" euro x 3/4"	3/4"	ø 18	27	31	3/4"	30	88.01.155
1" euro x 3/4"	1"	ø 24	30		3/4"	38	88.01.170
1" euro x 1"	1"	ø 24	30		1"	38	88.01.160

### 88.01



90° FEMALE ELBOW  
COUPLING

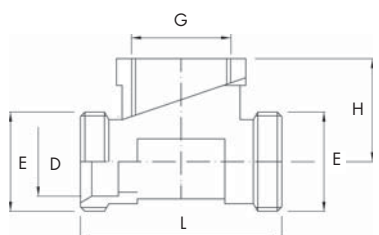


Size in mm	E	D	L	H	Code
1/2" euro	1/2"	ø 15	44	22	88.01.200
3/4" euro	3/4"	ø 18	50	25	88.01.205
1" euro	1"	ø 24	60	30	88.01.210

### 88.01



TEE COUPLING

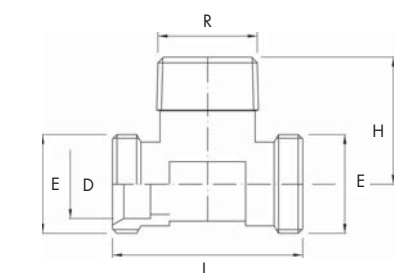


Size in mm	E	D	L	G	H	Code
1/2" euro x 1/2" x 1/2" euro	1/2"	ø 15	47	1/2"	22	88.01.250
3/4" euro x 1/2" x 3/4" euro	3/4"	ø 18	53	1/2"	27	88.01.270
3/4" euro x 3/4" x 3/4" euro	3/4"	ø 18	53	3/4"	27	88.01.255
1" euro x 3/4" x 1" euro	1"	ø 24	64	3/4"	27	88.01.265
1" euro x 1" x 1" euro	1"	ø 24	64	1"	32	88.01.260

### 88.01



FEMALE TEE  
COUPLING

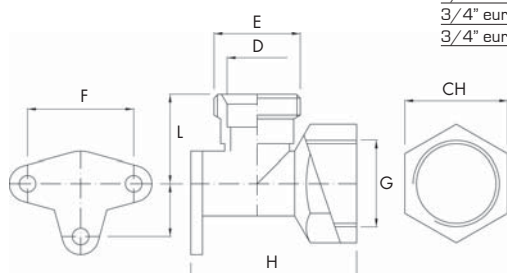


Size in mm	E	D	L	R	H	Code
1/2" euro x 1/2" x 1/2" euro	1/2"	ø 15	44	1/2"	29	88.01.280
3/4" euro x 3/4" x 3/4" euro	3/4"	ø 18	50	3/4"	34	88.01.285
1" euro x 3/4" x 1" euro	1"	ø 24	65	3/4"	34	88.01.295
1" euro x 1" x 1" euro	1"	ø 24	65	1"	35	88.01.290

### 88.01



MALE TEE  
COUPLING



Size in mm	E	D	L	Ch	G	H	F	Code
1/2" euro x 1/2"	1/2"	ø 15	24	25	1/2"	39	34	88.01.300
3/4" euro x 1/2"	3/4"	ø 18	27	25	1/2"	44	32	88.01.310
3/4" euro x 3/4"	3/4"	ø 24	27	31	3/4"	50	32	88.01.305

### 88.01

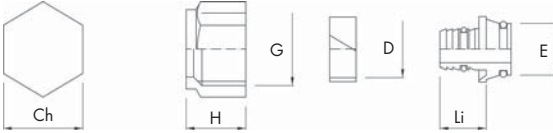


90° WALLPLATE  
FEMALE COUPLING



## DIMENSIONS

Size in mm	Ch	H	G	D	Li	E	Codice
16 x 2 - 1/2"	24	18	1/2"	ø 16	14	1/2" - ø 15	88.03.016
16 x 2,25 - 1/2"	24	18	1/2"	ø 16	14	1/2" - ø 15	88.03.017

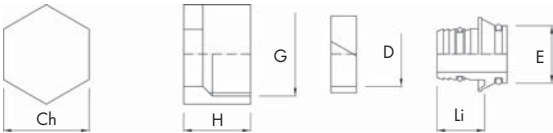


**88.03**



SCREW FITTING  
WITH 1/2" NUT

Size in mm	Ch	H	G	D	Li	E	Codice
14 x 2 - 3/4"	27	18	3/4"	ø 14	15	3/4" - ø 18	88.03.110
16 x 2 - 3/4"	27	18	3/4"	ø 16	15	3/4" - ø 18	88.03.116
16 x 2,25 - 3/4"	27	18	3/4"	ø 16	15	3/4" - ø 18	88.03.120
17 x 2 - 3/4"	27	21	3/4"	ø 17	15	3/4" - ø 18	88.03.123
18 x 2 - 3/4"	27	21	3/4"	ø 18	15	3/4" - ø 18	88.03.126
20 x 2 - 3/4"	27	21	3/4"	ø 20	15	3/4" - ø 18	88.03.136
20 x 2,5 - 3/4"	27	21	3/4"	ø 20	15	3/4" - ø 18	88.03.140

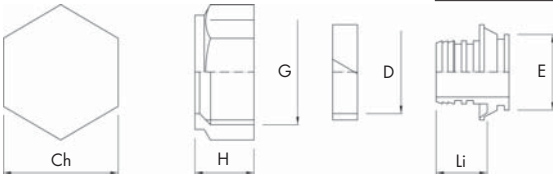


**88.03**



SCREW FITTING  
WITH 3/4" NUT

Size in mm	Ch	H	G	D	Li	E	Codice
16 x 2 - 1"	37	17	1"	ø 16	15	1" - ø 24	88.03.310
20 x 2 - 1"	37	17	1"	ø 20	15	1" - ø 24	88.03.315
26 x 3 - 1"	37	19	1"	ø 26	16	1" - ø 24	88.03.321

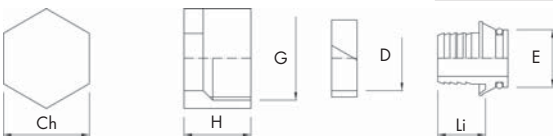


**88.03**



SCREW FITTING  
WITH 1" NUT

Size in mm	Ch	H	G	D	Li	E	Codice
12 x 2 - 3/4" PEX	27	20	3/4"	ø 12	18	3/4" - ø 18	88.03.006
16 x 2 - 3/4" PEX	27	18	3/4"	ø 16	15	3/4" - ø 18	88.03.118
17 x 2 - 3/4" PEX	27	21	3/4"	ø 17	15	3/4" - ø 18	88.03.119
20 x 2 - 3/4" PEX	27	21	3/4"	ø 20	15	3/4" - ø 18	88.03.138



**88.03**



SCREW FITTING  
WITH 3/4" NUT

Size in mm	Codice
15 x 1/2"	88.03.150

**88.03**



SCREW FITTING  
FOR COPPER PIPE  
WITH INSERT

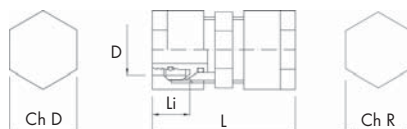
Size in mm	Codice
12 x 1/2"	88.03.170
12 x 3/4"	88.03.175
15 x 1"	88.03.165
18 x 1"	88.03.155
22 x 1"	88.03.160

**88.03**



SCREW FITTING  
FOR COPPER PIPE  
WITH INSERT

## DIMENSIONS

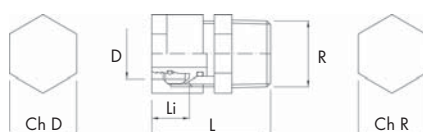


Size in mm	Ch D	Ch R	D	Li	L	Code
16 x 2	24	21	ø 16	14	57	88.03.415
16 x 2,25	24	21	ø 16	14	57	88.03.416
14 x 2	27	26	ø 14	15	57	88.03.419
16 x 2	27	26	ø 16	15	57	88.03.420
16 x 2,25	27	26	ø 16	15	57	88.03.421
17 x 2	27	26	ø 17	15	57	88.03.425
18 x 2	27	26	ø 18	15	57	88.03.430
20 x 2	27	26	ø 20	15	57	88.03.435
20 x 2,5	27	26	ø 20	15	57	88.03.436
26 x 3	37	33	ø 26	16	61	88.03.445
32 x 3	48	44	ø 32	20	68	88.03.450

### 88.03



DOUBLE STRAIGHT COUPLING

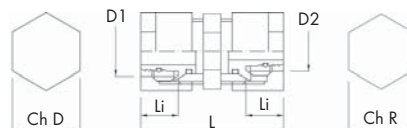


Size in mm	Ch D	Ch R	D	Li	L	R	Code
16 x 2 - 1/2"	24	21	ø 16	14	45	1/2"	88.03.515
16 x 2,25 - 1/2"	24	21	ø 16	14	45	1/2"	88.03.516
14 x 2 - 1/2"	27	26	ø 14	15	47	1/2"	88.03.519
16 x 2 - 1/2"	27	26	ø 16	15	47	1/2"	88.03.520
16 x 2,25 - 1/2"	27	26	ø 16	15	47	1/2"	88.03.521
17 x 2 - 1/2"	27	26	ø 17	15	47	1/2"	88.03.525
18 x 2 - 1/2"	27	26	ø 18	15	47	1/2"	88.03.530
20 x 2 - 1/2"	27	26	ø 20	15	47	1/2"	88.03.535
20 x 2,5 - 1/2"	27	26	ø 20	15	47	1/2"	88.03.536
16 x 2 - 3/4"	27	27	ø 16	15	47	3/4"	88.03.540
16 x 2,25 - 3/4"	27	27	ø 16	15	47	3/4"	88.03.541
17 x 2 - 3/4"	27	27	ø 17	15	47	3/4"	88.03.545
18 x 2 - 3/4"	27	27	ø 18	15	47	3/4"	88.03.550
20 x 2 - 3/4"	27	27	ø 20	15	47	3/4"	88.03.555
20 x 2,5 - 3/4"	27	27	ø 20	15	47	3/4"	88.03.556
26 x 3 - 3/4"	37	33	ø 26	16	48	3/4"	88.03.560
26 x 3 - 1"	37	33	ø 26	16	51	1"	88.03.580
32 x 3 - 1"	48	44	ø 32	20	54	1"	88.03.585

### 00.03



ISO 7/2 DOUBLE STRAIGHT COUPLING

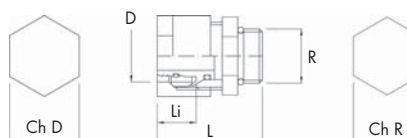


Size in mm	Ch D	Ch R	D1	D2	Li	L	Code
18 x 2 - 16 x 2	27	26	ø 18	ø 16	15	57	88.03.840
20 x 2 - 16 x 2	27	26	ø 20	ø 16	15	57	88.03.855
20 x 2,5 - 16 x 2,25	27	26	ø 20	ø 16	15	57	88.03.856
20 x 2 - 17 x 2	27	26	ø 20	ø 17	15	57	88.03.860
20 x 2 - 18 x 2	27	26	ø 20	ø 18	15	57	88.03.865

### 00.03



REDUCED STRAIGHT COUPLING



Size in mm	Ch D	Ch R	D	Li	L	R	Code
16 x 2 - 1/2"	24	27	ø 16	14	40	1/2"	88.03.610
16 x 2,25 - 1/2"	24	27	ø 16	14	40	1/2"	88.03.616
14 x 2 - 1/2"	27	26	ø 14	15	40	1/2"	88.03.619
16 x 2 - 1/2"	27	26	ø 16	15	40	1/2"	88.03.620
18 x 2 - 1/2"	27	26	ø 18	15	40	1/2"	88.03.630
20 x 2 - 1/2"	27	26	ø 20	15	40	1/2"	88.03.635

### 88.03



NICKEL-PLATED MALE STRAIGHT COUPLING WITH O-RING



Size in mm	Ch D	Ch R	D	Li	L	G	Code
16 x 2 - 1/2"	24	25	ø 16	14	44	1/2"	88.03.710
16 x 2,25 - 1/2"	24	25	ø 16	14	44	1/2"	88.03.711
14 x 2 - 1/2"	27	26	ø 14	15	46	1/2"	88.03.714
16 x 2 - 1/2"	27	26	ø 16	15	46	1/2"	88.03.715
16 x 2,25 - 1/2"	27	26	ø 16	15	46	1/2"	88.03.716
17 x 2 - 1/2"	27	26	ø 17	15	46	1/2"	88.03.720
18 x 2 - 1/2"	27	26	ø 18	15	46	1/2"	88.03.725
20 x 2 - 1/2"	27	26	ø 20	15	46	1/2"	88.03.730
20 x 2,5 - 1/2"	27	26	ø 20	15	46	1/2"	88.03.731
16 x 2 - 3/4"	27	31	ø 16	15	46	3/4"	88.03.735
16 x 2,25 - 3/4"	27	31	ø 16	15	46	3/4"	88.03.736
17 x 2 - 3/4"	27	31	ø 17	15	46	3/4"	88.03.740
18 x 2 - 3/4"	27	31	ø 18	15	46	3/4"	88.03.745
20 x 2 - 3/4"	27	31	ø 20	15	46	3/4"	88.03.750
20 x 2,5 - 3/4"	27	31	ø 20	15	46	3/4"	88.03.751
26 x 3 - 3/4"	38	31	ø 26	16	53	3/4"	88.03.755
26 x 3 - 1"	38	38	ø 26	16	53	1"	88.03.775
32 x 3 - 1"	48	44	ø 32	20	54	1"	88.03.780

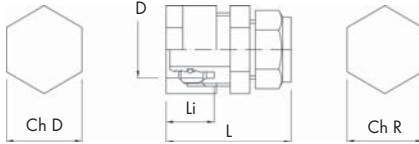
### 88.03



FEMALE STRAIGHT COUPLING



## DIMENSIONS

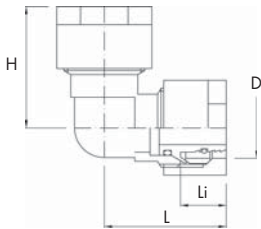


Size in mm	Ch D	Ch R	D	Li	L	Code
16x2	24	21	ø 16	16	41	87.31.605
18x2	27	26	ø 18	15	50	87.31.610
20x2	27	27	ø 20	17	44	87.31.615
26x3	37	33	ø 26	19	50	87.31.620

### 87.31



PRESSURE PLUGS  
FOR TESTING SYSTEM

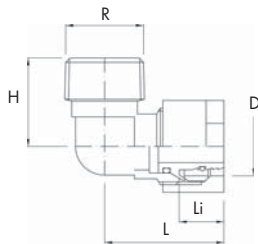


Size in mm	Ch D	D	Li	L	H	Code
16 x 2	24	ø 16	14	37	37	88.04.015
16 x 2,25	24	ø 16	14	37	37	88.04.016
14 x 2	27	ø 14	15	40	40	88.04.019
16 x 2	27	ø 16	15	40	40	88.04.020
16 x 2,25	27	ø 16	15	40	40	88.04.021
17 x 2	27	ø 17	15	40	40	88.04.025
18 x 2	27	ø 18	15	40	40	88.04.030
20 x 2	27	ø 20	15	40	40	88.04.035
20 x 2,5	27	ø 20	15	40	40	88.04.036
26 x 3	37	ø 26	16	46	46	88.04.045
32 x 3	48	ø 32	20	54	54	88.04.050

### 88.04



90° ELBOW  
COUPLING

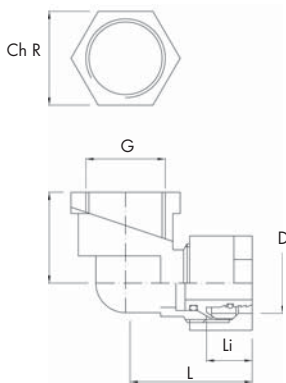


Size in mm	Ch D	D	Li	L	H	R	Code
16 x 2 - 1/2"	24	ø 16	14	39	26	1/2"	88.04.115
16 x 2,25 - 1/2"	24	ø 16	14	39	26	1/2"	88.04.116
14 x 2 - 1/2"	27	ø 14	15	41	26	1/2"	88.04.119
16 x 2 - 1/2"	27	ø 16	15	41	26	1/2"	88.04.120
16 x 2,25 - 1/2"	27	ø 16	15	41	26	1/2"	88.04.121
17 x 2 - 1/2"	27	ø 17	15	41	26	1/2"	88.04.125
18 x 2 - 1/2"	27	ø 18	15	41	26	1/2"	88.04.130
20 x 2 - 1/2"	27	ø 20	15	41	26	1/2"	88.04.135
20 x 2,5 - 1/2"	27	ø 20	15	41	26	1/2"	88.04.136
16 x 2 - 3/4"	27	ø 16	15	40	30	3/4"	88.04.140
16 x 2,25 - 3/4"	27	ø 16	15	40	30	3/4"	88.04.141
17 x 2 - 3/4"	27	ø 17	15	40	30	3/4"	88.04.145
18 x 2 - 3/4"	27	ø 18	15	40	30	3/4"	88.04.150
20 x 2 - 3/4"	27	ø 20	15	40	30	3/4"	88.04.155
20 x 2,5 - 3/4"	27	ø 20	15	40	30	3/4"	88.04.156
26 x 3 - 3/4"	37	ø 26	16	46	37	3/4"	88.04.160
26 x 3 - 1"	37	ø 26	16	46	34	1"	88.04.180
32 x 3 - 1"	48	ø 32	20	54	45	1"	88.04.185

### 88.04



90° MALE ELBOW  
COUPLING



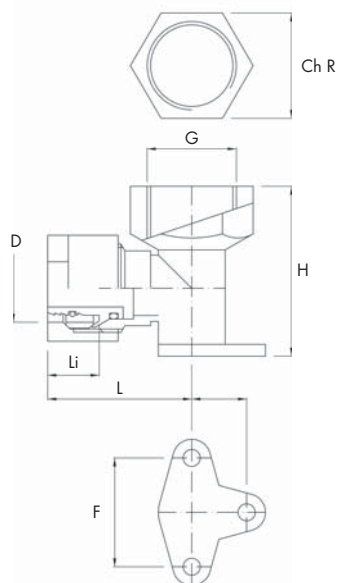
Size in mm	Ch D	Ch R	D	Li	L	H	G	Code
16 x 2 - 1/2"	24	25	ø 16	14	39	25	1/2"	88.04.215
16 x 2,25 - 1/2"	24	25	ø 16	14	39	25	1/2"	88.04.216
14 x 2 - 1/2"	27	25	ø 14	15	42	27	1/2"	88.04.219
16 x 2 - 1/2"	27	25	ø 16	15	42	27	1/2"	88.04.220
16 x 2,25 - 1/2"	27	25	ø 16	15	42	27	1/2"	88.04.221
17 x 2 - 1/2"	27	25	ø 17	15	42	27	1/2"	88.04.225
18 x 2 - 1/2"	27	25	ø 18	15	42	27	1/2"	88.04.230
20 x 2 - 1/2"	27	25	ø 20	15	42	27	1/2"	88.04.235
20 x 2,5 - 1/2"	27	25	ø 20	15	42	27	1/2"	88.04.236
14 x 2 - 3/4"	27	31	ø 14	15	42	30	3/4"	88.04.239
16 x 2 - 3/4"	27	31	ø 16	15	42	30	3/4"	88.04.240
16 x 2,25 - 3/4"	27	31	ø 16	15	42	30	3/4"	88.04.241
17 x 2 - 3/4"	27	31	ø 17	15	42	30	3/4"	88.04.245
18 x 2 - 3/4"	27	31	ø 18	15	42	30	3/4"	88.04.250
20 x 2 - 3/4"	27	31	ø 20	15	42	30	3/4"	88.04.255
20 x 2,5 - 3/4"	27	31	ø 20	15	42	30	3/4"	88.04.256
26 x 3 - 3/4"	37	\	ø 26	16	46	32	3/4"	88.04.260
26 x 3 - 1"	37	\	ø 26	16	46	38	1"	88.04.280
32 x 3 - 1"	48	\	ø 32	20	54	45	1"	88.04.285

### 88.04



90° FEMALE ELBOW  
COUPLING

## DIMENSIONS

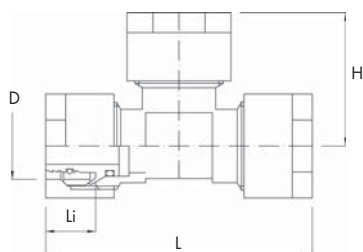


Size in mm	Ch	D	Ch R	D	Li	L	H	G	F	Code
16 x 2 - 1/2"	24	25	ø 16	14	39	39	1/2"	34	88.04.315	
16 x 2,25 - 1/2"	24	25	ø 16	14	39	39	1/2"	34	88.04.316	
14 x 2 - 1/2"	27	25	ø 14	15	42	44	1/2"	32	88.04.319	
16 x 2 - 1/2"	27	25	ø 16	15	42	44	1/2"	32	88.04.320	
16 x 2,25 - 1/2"	27	25	ø 16	15	42	44	1/2"	32	88.04.321	
17 x 2 - 1/2"	27	25	ø 17	15	42	44	1/2"	32	88.04.325	
18 x 2 - 1/2"	27	25	ø 18	15	42	44	1/2"	32	88.04.330	
20 x 2 - 1/2"	27	25	ø 20	15	42	44	1/2"	32	88.04.335	
20 x 2,5 - 1/2"	27	25	ø 20	15	42	44	1/2"	32	88.04.336	
16 x 2 - 3/4"	27	31	ø 16	15	42	49	3/4"	32	88.04.350	
16 x 2,25 - 3/4"	27	31	ø 16	15	42	49	3/4"	32	88.04.351	
17 x 2 - 3/4"	27	31	ø 17	15	42	49	3/4"	32	88.04.355	
18 x 2 - 3/4"	27	31	ø 18	15	42	49	3/4"	32	88.04.360	
20 x 2 - 3/4"	27	31	ø 20	15	42	49	3/4"	32	88.04.365	

### 88.04



90° WALLPLATE  
FEMALE ELBOW  
COUPLING

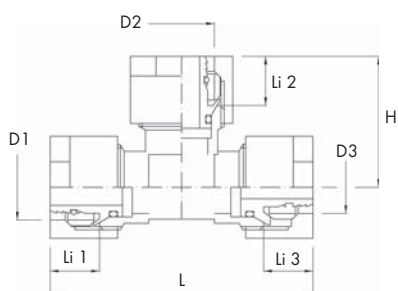


Size in mm	Ch	D	D	Li	L	H	Code
16 x 16 x 16	24	ø 16	14	74	37	88.04.515	
16 x 2,25 - 16 x 2,25 - 16 x 2,25	24	ø 16	14	74	37	88.04.516	
14 x 14 x 14	27	ø 14	15	80	40	88.04.519	
16 x 16 x 16	27	ø 16	15	80	40	88.04.520	
17 x 17 x 17	27	ø 17	15	80	40	88.04.525	
18 x 18 x 18	27	ø 18	15	80	40	88.04.530	
20 x 20 x 20	27	ø 20	15	80	40	88.04.535	
20 x 2,5 - 20 x 2,5 - 20 x 2,5	27	ø 20	15	80	40	88.04.536	
26 x 26 x 26	37	ø 26	16	93	46	88.04.540	
32 x 32 x 32	48	ø 32	20	108	54	88.04.532	

### 88.04



TEE COUPLING



Size in mm	Ch	D	D1	Li 1	D2	Li 2	D3	Li 3	L	H	Code
16 x 2 - 18 x 2 - 16 x 2	27	ø 16	15	ø 18	15	ø 16	15	80	40	88.04.541	
16 x 2 - 20 x 2 - 16 x 2	27	ø 16	15	ø 20	15	ø 16	15	80	40	88.04.444	
18 x 2 - 16 x 2 - 16 x 2	27	ø 18	15	ø 16	15	ø 16	15	80	40	88.04.542	
18 x 2 - 18 x 2 - 16 x 2	27	ø 18	15	ø 18	15	ø 16	15	80	40	88.04.543	
18 x 2 - 18 x 2 - 20 x 2	27	ø 18	15	ø 18	15	ø 20	15	80	40	88.04.544	
18 x 2 - 20 x 2 - 16 x 2	27	ø 18	15	ø 20	15	ø 16	15	80	40	88.04.545	
18 x 2 - 20 x 2 - 18 x 2	27	ø 18	15	ø 20	15	ø 18	15	80	40	88.04.546	
20 x 2 - 18 x 2 - 16 x 2	27	ø 20	15	ø 18	15	ø 16	15	80	40	88.04.547	
20 x 2 - 18 x 2 - 18 x 2	27	ø 20	15	ø 18	15	ø 18	15	80	40	88.04.548	
20 x 2 - 20 x 2 - 18 x 2	27	ø 20	15	ø 20	15	ø 18	15	80	40	88.04.549	
20 x 2 - 16 x 2 - 18 x 2	27	ø 20	15	ø 16	15	ø 18	15	80	40	88.04.550	
18 x 2 - 16 x 2 - 18 x 2	27	ø 18	15	ø 16	15	ø 18	15	80	40	88.04.555	
20 x 2 - 16 x 2 - 16 x 2	27	ø 20	15	ø 16	15	ø 16	15	80	40	88.04.558	
20 x 2 - 16 x 2 - 20 x 2	27	ø 20	15	ø 16	15	ø 20	15	80	40	88.04.560	
20 x 2 - 18 x 2 - 20 x 2	27	ø 20	15	ø 18	15	ø 20	15	80	40	88.04.565	
20 x 2 - 20 x 2 - 16 x 2	27	ø 20	15	ø 20	15	ø 16	15	80	40	88.04.566	
26 x 2 - 16 x 2 - 26 x 2	37	ø 26	16	ø 16	15	ø 26	16	93	46	88.04.580	
26 x 2 - 20 x 2 - 26 x 2	37	ø 26	16	ø 20	15	ø 26	16	93	46	88.04.590	

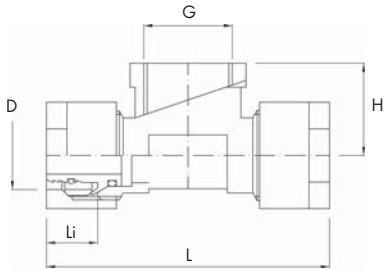
### 88.04



REDUCED TEE  
COUPLING



## DIMENSIONS

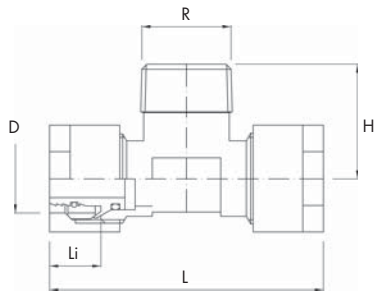


Size in mm	Ch D	D	Li	L	H	G	Code
16 x 1/2" x 16	24	ø 16	14	78	22	1/2"	88.04.615
16 x 2,25 - 1/2" - 16 x 2,25	24	ø 16	14	78	22	1/2"	88.04.616
14 x 1/2" x 14	27	ø 14	15	83	27	1/2"	88.04.619
16 x 1/2" x 16	27	ø 16	15	83	27	1/2"	88.04.620
16 x 2,25 - 1/2" - 16 x 2,25	27	ø 16	15	83	27	1/2"	88.04.621
17 x 1/2" x 17	27	ø 17	15	83	27	1/2"	88.04.625
18 x 1/2" x 18	27	ø 18	15	83	27	1/2"	88.04.630
20 x 1/2" x 20	27	ø 20	15	83	27	1/2"	88.04.635
20 x 2,5 - 1/2" - 20 x 2,5	27	ø 20	15	83	27	1/2"	88.04.636
16 x 3/4" x 16	27	ø 16	15	83	27	3/4"	88.04.640
16 x 2,25 - 3/4" - 16 x 2,25	27	ø 16	15	83	27	3/4"	88.04.641
17 x 3/4" x 17	27	ø 17	15	83	27	3/4"	88.04.645
18 x 3/4" x 18	27	ø 18	15	83	27	3/4"	88.04.650
20 x 3/4" x 20	27	ø 20	15	83	27	3/4"	88.04.655
20 x 2,5 - 3/4" - 20 x 2,5	27	ø 20	15	83	27	3/4"	88.04.656
26 x 3/4" x 26	37	ø 26	16	97	32	3/4"	88.04.660
26 x 1" x 26	37	ø 26	16	97	32	1"	88.04.680
32 x 1" x 32	48	ø 32	20	108	45	1"	88.04.685

### 88.04



FEMALE TEE COUPLING



Size in mm	Ch D	D	Li	L	H	R	Code
16 x 1/2" x 16	24	ø 16	14	75	29	1/2"	88.04.715
16 x 2,25 - 1/2" - 16 x 2,25	24	ø 16	14	75	29	1/2"	88.04.716
14 x 3/4" x 14	27	ø 14	15	80	33	3/4"	88.04.719
16 x 3/4" x 16	27	ø 16	15	80	33	3/4"	88.04.720
16 x 2,25 - 3/4" - 16 x 2,25	27	ø 16	15	80	33	3/4"	88.04.721
17 x 3/4" x 17	27	ø 17	15	80	33	3/4"	88.04.725
18 x 3/4" x 18	27	ø 18	15	80	33	3/4"	88.04.730
20 x 3/4" x 20	27	ø 20	15	80	33	3/4"	88.04.735
20 x 2,5 - 3/4" - 20 x 2,5	27	ø 20	15	80	33	3/4"	88.04.736
26 x 3/4" x 26	37	ø 26	16	98	33	3/4"	88.04.740
26 x 1" x 26	37	ø 26	16	98	35	1"	88.04.760
32 x 1" x 32	48	ø 32	20	108	45	1"	88.04.765

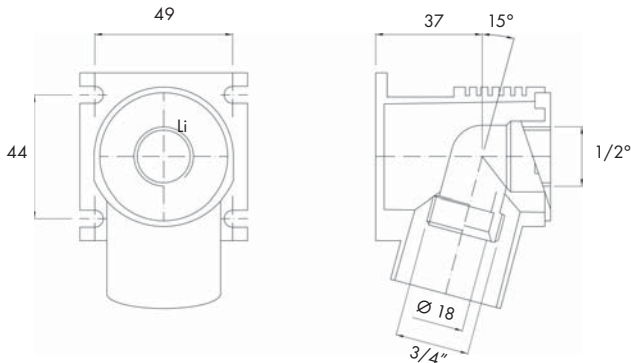
### 88.04



MALE TEE COUPLING

Size in mm	Code
3/4" Euro x 1/2" F	88.03.205

### 88.03



UNDERFLOOR DISTRIBUTION BOX WITH FITTING

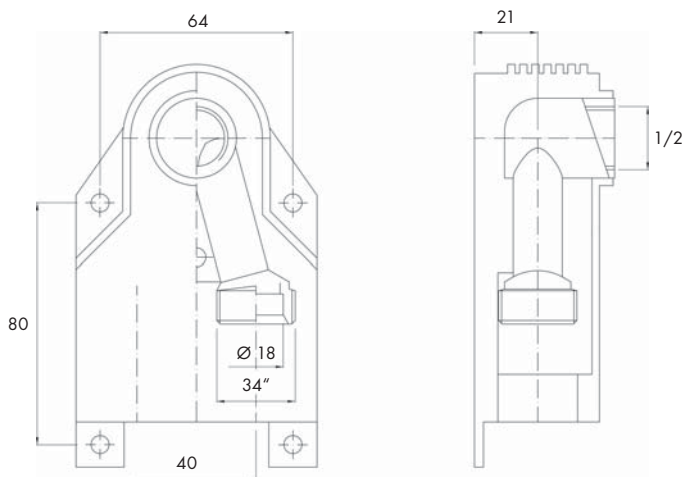
Size in mm

3/4" Euro x 1/2" F

Code

88.03.210

**88.03**



UNDERFLOOR  
DISTRIBUTION BOX  
WITH FITTING

Size in mm

155

Code

88.03.200

**88.03**



TEMPLATE  
FOR UNDERFLOOR  
DISTRIBUTION BOX